



**Acme**  
**Automation**  
THE SOLUTION YOU NEED





# About ACME Automation

ACME Automation is an ever-growing, customer-centric company in the field of industrial , home automation. In industrial automation, they provide cutting-edge PLC-based automated control panels, servo and stepper motors, drives, and a wide range of electrical control panel solutions to help businesses streamline their operations and increase productivity.

Founded with a mission to revolutionize the way industries and homes interact with technology, ACME Automation has been at the forefront of the automation revolution. With a team of highly skilled engineers and technicians, the company has developed innovative solutions that cater to the diverse needs of its clientele, from small-scale enterprises to large-scale industrial giants.

In the realm of industrial automation, ACME offers comprehensive PLC-based automated control panel solutions, state-of-the-art servo and stepper motor technologies, advanced drive systems, and a wide range of LT/HT electrical panel solutions. Our team of seasoned engineers and technicians work closely with clients to understand their unique challenges and design custom-engineered systems that optimize performance, reduce downtime, and maximize productivity.

[\*\*Explore Our Solutions\*\*](#)[\*\*Contact ...\*\*](#)





## Industry Expertise and Customer-Centric Approach

At ACME Automation, we have a proven track record of providing cost-effective solutions to a wide range of industries. Our commitment to excellent after-sales service support has helped us cultivate strong relationships with our customers, enabling us to truly understand and meet their total automation needs. By continuously introducing the latest technologies, we aim to deliver the utmost benefits to our existing customers while also attracting new clients to our growing portfolio.

Our focus on innovation and customer satisfaction sets us apart in the automation industry. We work closely with our clients to deeply understand their unique challenges and requirements, and then leverage our extensive expertise to develop customized solutions that address their pain points. Whether it's machine automation, plant automation, or process automation, we have the capabilities and the drive to deliver cutting-edge, user-friendly, and affordable automation systems that drive real results for our customers.

# Quality Assurance



1

## Rigorous Testing Protocols

At ACME Automation, we have implemented stringent quality assurance protocols to ensure our products and solutions meet the highest standards. Our team of experienced engineers and technicians conduct extensive testing at every stage of the development and manufacturing process, from component selection to final product assembly. We utilize state-of-the-art testing equipment and follow industry best practices to identify and address any potential issues, ensuring our customers receive only the most reliable and high-performing automation solutions.

3

## Continuous Improvement

At ACME Automation, we are committed to a culture of continuous improvement. We regularly review our quality assurance processes and incorporate feedback from our customers to identify areas for enhancement. By continually investing in new testing methods, training our personnel, and implementing the latest quality management best practices, we strive to stay ahead of the curve and provide our clients with the most reliable and innovative automation solutions in the industry.

2

## Dedicated Quality Control Team

Our dedicated quality control team is responsible for overseeing the entire production process and ensuring the consistent quality of our products. They closely monitor every step, from raw material procurement to the final inspection and packaging, to identify and resolve any quality-related concerns. This meticulous attention to detail allows us to deliver automation solutions that consistently meet or exceed our customers' expectations.

4

## Certification and Compliance

To further demonstrate our commitment to quality, ACME Automation is certified to ISO 9001:2015 standards. This internationally recognized certification ensures that our quality management system meets the most stringent requirements for consistency, continuous improvement, and customer satisfaction. Additionally, all of our products and solutions are designed and manufactured to comply with relevant industry regulations and safety standards, giving our clients the peace of mind they deserve.



# PLC Panels



Our PLC panels are engineered to provide precise, reliable, and efficient control for a wide array of industrial applications. Seamlessly integrated with leading PLC platforms like Allen-Bradley, Schneider Electric, Siemens, Mitsubishi and Delta , these panels offer unparalleled performance and flexibility. Designed with the latest advancements in programmable logic controllers, our PLC panels can be customized to meet the unique requirements of each industrial process, from automated manufacturing lines to complex material handling systems. With robust construction, intuitive programming interfaces, and comprehensive safety features, these panels ensure optimal productivity, energy efficiency, and process reliability for our clients.





## VFD Panels



Presenting a comprehensive range of VFD Panels, Panels, catering to power requirements from 0.37KW to 560KW for Low Voltage (LV) Drives. Our VFD Panels offer versatile solutions across a multitude of applications, including Fan, Pump, Pump, Conveyor, Surface/Centre Winding, Compressor, Mixer, Extruder, Agitators, and various other industrial processes. Our drive panels are designed to deliver precise speed and torque control, ensuring optimal energy efficiency and precise motion control for your critical processes. Equipped with leading VFD brands like Allen Bradley, Siemens, ABB, Schneider Electric, Yaskawa, Delta, these panels provide advanced features like energy optimization, optimization, regenerative braking, and predictive maintenance, empowering our clients to maximize productivity and minimize operational costs.



# MCC Panels



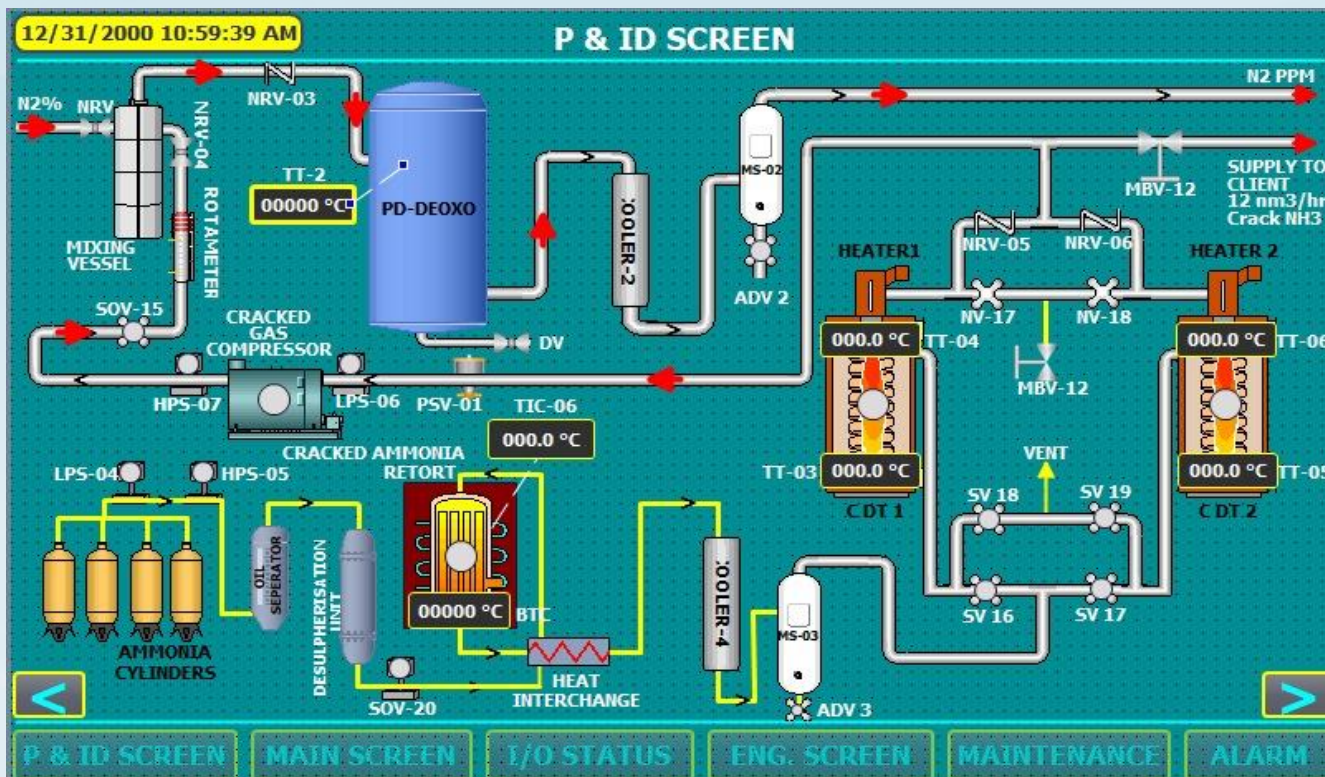
For centralized motor control and monitoring, our MCC panels offer a robust and versatile solution. Equipped with the latest advancements in electrical distribution and protection technologies, these panels ensure the reliable and safe operation of your machinery. Delivering top-quality MCC Panels, both compartmentalized and non-compartmentalized designs, our solutions cater to a wide range of power requirements. We supply renowned brand switchgear options from Siemens, Schneider, ABB, and L&T, tailored to meet the specific requirements of our clients. Our intelligent MCC panels feature advanced control and monitoring capabilities, such as Siemens Simocode, Schneider LTMR, and ABB and ABB UMC 100.3, enabling local and remote operation, as well as auto and manual modes to suit the unique needs of each industry.





## PLC/SCADA Systems and HMI Solutions

To provide comprehensive automation solutions, we also offer PLC/SCADA systems and cutting-edge HMI solutions. These systems enable real-time monitoring, data acquisition, and seamless process control, empowering our clients to make informed decisions and optimize their operations. Our PLC/SCADA platforms are integrated with leading industrial automation brands, ensuring compatibility and seamless integration with your existing systems. Our HMI solutions feature intuitive user interfaces, advanced data visualization, and powerful control functionalities, allowing operators to monitor, analyze, and respond to critical process parameters with ease. By leveraging these advanced automation technologies, we help our clients achieve enhanced productivity, improved energy efficiency, and increased overall equipment effectiveness.





# PCC Panels

Our team has successfully commissioned Incoming breakers with a capacity of up to 4000A, along with 40 Outgoing feeders, showcasing our expertise in delivering high-performance PCC panels. We provide renowned brand switchgear options, including Siemens, Schneider, ABB, and L&T, tailored to meet the specific requirements of our clients. Our flexibility extends to offering Copper or Aluminium busbars, catering to the preferences and needs of each project. These PCC panels are designed to ensure efficient power distribution, reliable protection, and seamless integration with other electrical systems, making them an essential component of any industrial or commercial facility.



# Instrumentation Panels

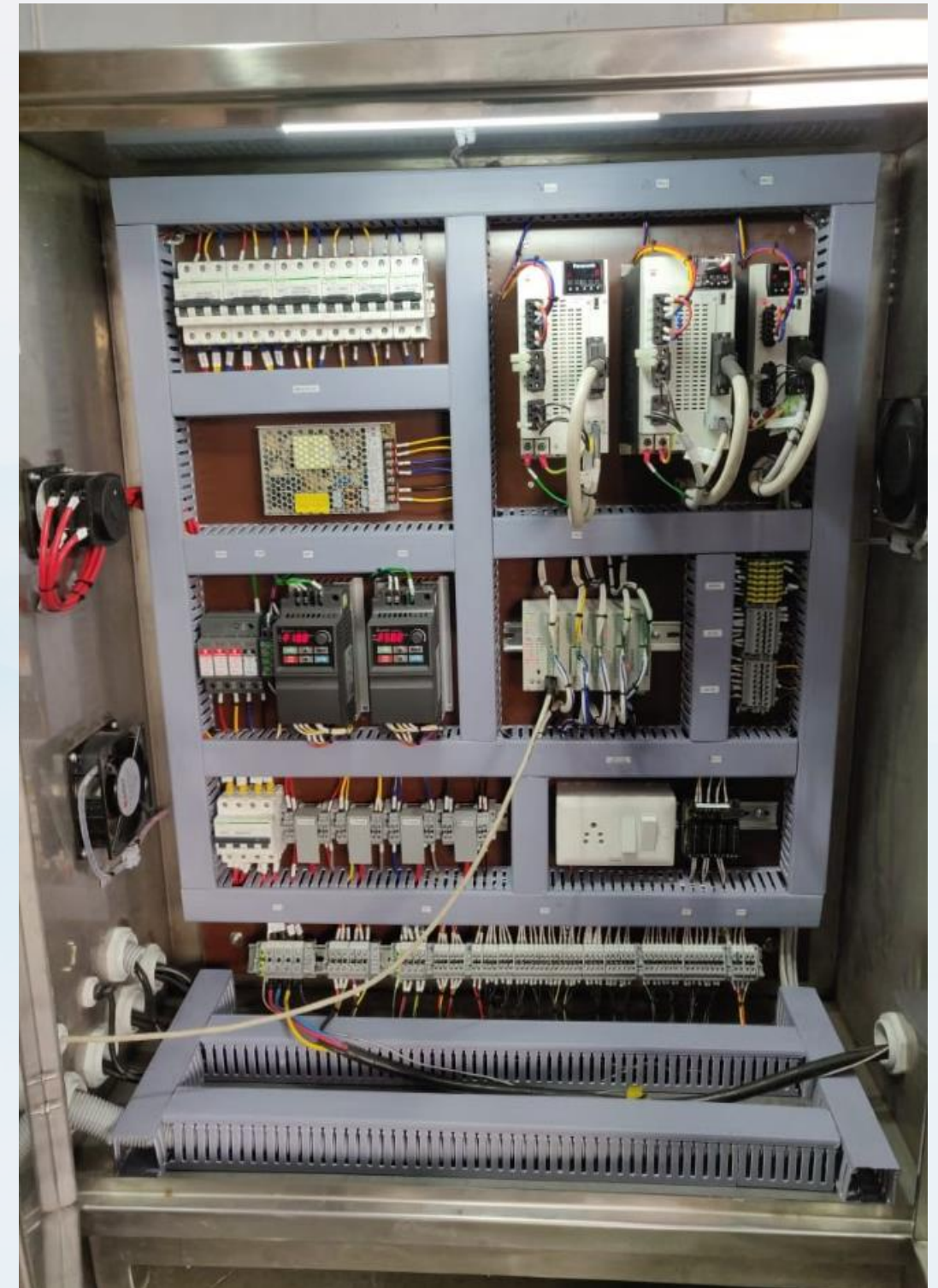
We specialize in the manufacturing and supply of Instrumentation Panels designed for the operation of various instruments, including Temperature, Pressure, Flow, Level, and Electrical Parameters. Our expertise extends to the development and fulfillment of customized Instrument Panels for OEM clients. These panels integrate cutting-edge instrumentation technologies to provide precise monitoring, control, and data acquisition for critical industrial processes. Additionally, we offer PVC junction boxes that include terminals and markers, providing varying degrees of protection such as IP54, IP55, and IP65, ensuring the safety and reliability of your electrical installations.





# VFDs and Servo Motors

Our VFD and servo motor solutions are the cornerstone of our motion control offerings. Leveraging the latest advancements in variable frequency drive technology and high-performance servo systems, we deliver precise, energy-efficient, and reliable control for your most demanding applications.





# Building Management System / Fire & Safety System

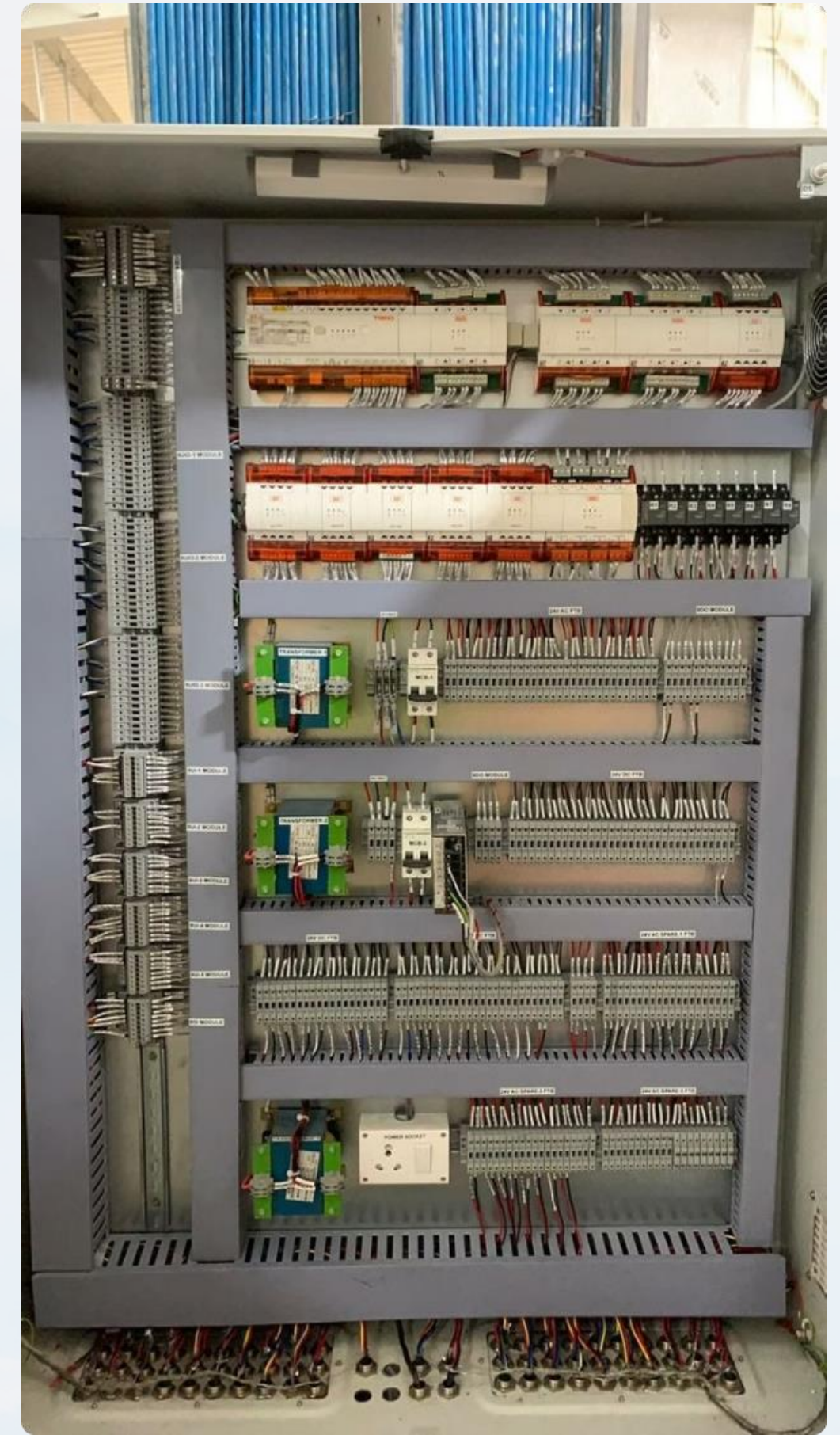


At ACME Automation, we offer comprehensive building management and fire & security system solutions to cater to the diverse needs of our clients. Our building management system seamlessly integrates various building subsystems, such as HVAC, lighting, access control, and energy management, to optimize energy efficiency, enhance occupant comfort, and streamline facility operations.

Our fire & security system provides a robust and reliable solution to safeguard your premises. We design and implement cutting-edge fire alarm alarm systems, intrusion detection, and access control systems that comply with the latest safety standards. Our team of experts works closely with clients to understand their specific requirements and tailor the solutions accordingly, ensuring their buildings remain secure and protected.

protected  
• Integrated building management system (BMS)

- HVAC control and optimization
- Lighting automation and energy management
- Access control and security monitoring
- Fire alarm and detection systems
- Video surveillance and analytics
- Centralized monitoring and remote access





# Weather Monitoring System



At ACME Automation, we understand the critical importance of accurate and reliable weather monitoring in a variety of industries. Our weather monitoring solutions leverage the latest advancements in sensor technology, data processing, and cloud-based analytics to provide our clients with real-time, hyper-local weather data. From agricultural operations monitoring crop health and rainfall patterns to construction firms managing project timelines and safety, our weather monitoring systems are designed to deliver the insights needed to make informed decisions.

Our weather monitoring solutions include a comprehensive suite of sensors that track key meteorological parameters such as temperature, humidity, wind speed and direction, barometric pressure, and precipitation. These sensors are strategically placed across a client's facilities or project sites, transmitting data to a central monitoring platform that leverages powerful analytics and machine learning algorithms to transform raw data into actionable intelligence.

Through intuitive dashboards and customizable alerts, our clients can gain a deep understanding of local weather patterns, identify potential risks and disruptions, and optimize their operations accordingly. Whether it's planning the optimal planting schedule, managing construction timelines to avoid weather-related delays, or monitoring for severe storm events, our weather monitoring solutions empower our clients to stay one step ahead of Mother Nature.





# Industry 4.0

As technology continues to evolve at a rapid pace, the industrial landscape is undergoing a transformative shift towards a new era known as Industry 4.0. This cutting-edge concept represents the fourth industrial revolution, harnessing the power of advanced digital technologies to revolutionize manufacturing and automation processes.

At the heart of Industry 4.0 lies the seamless integration of cyber-physical systems, the Internet of Things (IoT), and data analytics. By connecting machines, sensors, and enterprise systems, companies can achieve unprecedented levels of efficiency, productivity, and flexibility in their operations. From predictive maintenance to real-time monitoring and optimization, Industry 4.0 empowers businesses to make data-driven decisions and stay ahead of the curve.

At ACME Automation, we are at the forefront of this technological revolution, providing our clients with innovative solutions that harness the power of Industry 4.0. Our expertise in areas such as PLC-based automation, SCADA systems, and industrial IoT devices enables us to design and implement cutting-edge solutions that drive operational excellence and foster a competitive edge.



# Our Automation Solutions



At ACME Automation, we provide comprehensive industrial automation system solutions to meet the diverse needs of our customers. Our expertise spans across machine automation, plant automation, process automation, and retrofitting with upgraded technologies. We are committed to delivering precise, quick, innovative, user-friendly, and affordable solutions that cater to the specific requirements of our clients.

**Our team of skilled professionals collaborates with reputed brands like Allen Bradley, Schneider Electric, Mitsubishi Electric, Siemens, and Delta to design, develop, and implement state-of-the-art automation systems.** Whether you're looking to automate your manufacturing processes, optimize your plant operations, or streamline your industrial workflows, we have the expertise and the resources to provide you with customized solutions that drive efficiency, productivity, and cost-effectiveness.

At the heart of our automation solutions lies a deep understanding of the latest industry trends and technologies. We stay at the forefront of innovation, constantly researching and incorporating new advancements to ensure that our clients have access to the most cutting-edge automation systems available. From programmable logic controllers (PLCs) and drive panels to motor control centers (MCCs) and human-machine interfaces (HMIs), we offer a comprehensive suite of automation products and services tailored to your specific needs.

# Our Comprehensive Automation Solutions



1

## Application Analysis

Our team will thoroughly study the customer's specific application requirements, preparing detailed flow charts and electrical drawings. This comprehensive understanding allows us to design the most effective and efficient automation solutions tailored to the customer's needs.

2

## PLC Configuration

Based on the application analysis, we will prepare a comprehensive list of required inputs and outputs. This information is then used to select the optimal PLC configuration, ensuring the right fieldbus interface and connectivity for seamless integration into the customer's systems.

3

## HMI & SCADA Design

Our experts will design user-friendly monitoring screens, alarms, historical data tracking, trends, logs, receipts, and reports, as well as comprehensive input/output status displays in the HMI and/or SCADA system. This ensures the customer has complete visibility and control over their automation processes.

4

## Control Panel Engineering

From design to testing, manufacturing, and commissioning, our team handles the entire control panel engineering process. This includes electrical diagrams, cable layout, load calculations, control design, and the development of comprehensive troubleshooting charts to ensure the panel's reliable and efficient operation.

5

## Installation & Commissioning

Our skilled technicians will handle the complete installation and commissioning of the automation system, ensuring a seamless integration into the customer's facility. This includes the physical installation of the control panel, as well as the integration and testing of all components to ensure the system is functioning as per the customer's requirements.



# Web Information



 [www.acmeautomation.in](http://www.acmeautomation.in)



## ACME Automati...

It can help a business in simplicity, to increase digital transformation,

# Contact Us



## Address:

23, FORTUNE INDUSTRIAL PARK,  
KATHWADA GIDC,  
AHMEDABAD, GUJARAT



## EMAIL:

[info@acmeautomation.in](mailto:info@acmeautomation.in)  
[sales@acmeautomation.in](mailto:sales@acmeautomation.in)



## MOBILE:

9727997049  
9727756069