

### Machine and Plant Automation



### Process Automation



*Empowering the future with smart automation....*



## ACME AUTOMATION

### Office & Work Shop:

40, 41 Sahajanand Industrial Hub,  
Nr. Road No. 05, GIDC Kathwada,  
Ahmedabad - 382430, Gujarat, India

**MOBILE :** +91 97279 97049 / 97277 56069

**EMAIL :** sales@acmeautomation.in ; info@acmeautomation.in



Process Automation

Plant Automation

Machine Automation

Mfg. of Control Panel

[www.acmeautomation.in](http://www.acmeautomation.in)

## Industry 4.0

Industry 4.0 epitomizes the fourth industrial revolution, integrating machines with wireless connectivity for autonomous decision-making.

ACME actively engages in digital automation, offering system integration and cutting-edge technologies to enhance flexibility and efficiency in manufacturing.

Empowering smart factories, ACME bridges operational technology with information technology to drive intelligent production.

Their comprehensive digital solutions span product design, planning, and commissioning for both process and discrete industries.

With a focus on the entire value chain, ACME delivers genuine added value for original equipment manufacturers and plant manufacturers.



## About us

ACME Automation is a leading name in Machine, Plant, and Process Automation, offering end-to-end solutions designed to enhance efficiency, productivity, and operational excellence.

With a state-of-the-art in-house manufacturing facility spread across 5,000 sq. ft. at Ahmedabad, we are fully equipped to handle both custom-built projects and bulk production of control panels for a wide range of industrial applications.

Backed by innovation and driven by precision, our solutions are tailored to meet the unique challenges of each industry we serve.

At ACME, quality is our top priority. We use only premium-grade automation products to ensure that our control panels deliver reliability, performance, and durability. Every product is manufactured in strict adherence to international quality standards, ensuring that our solutions meet the evolving needs of modern industries.

Our success is driven by a highly skilled technical and marketing team with extensive industry experience and in-depth market knowledge. This combination of expertise and insight allows us to craft innovative, value-driven automation solutions, enabling businesses to achieve their goals with confidence.

With ACME Automation, you gain more than just a service provider – you gain a partner dedicated to delivering quality, reliability, and technological excellence at every step.

## Vision, Mission & Values



### Vision

At ACME Automation, we are proud to be a preferred solution provider in the field of machine, plant and process automation.

Our expertise in specific industrial segments enables us to deliver tailored, high-quality solutions that improve efficiency, reduce downtime, and drive growth.

With a commitment to innovation and reliability, we continue to be the partner of choice for industries seeking advanced automation solutions.



### Mission

- Delivering precise, user-friendly, and cost-effective solutions for the control and monitoring of industrial machinery.
- Building long-term, value-driven partnerships with our customers and vendors based on trust and mutual growth.
- Continuously enhancing our infrastructure, technologies, and capabilities to stay ahead in a dynamic market.
- Developing and nurturing a skilled, motivated, and engaged team to drive innovation and excellence.



### Values

At ACME Automation, we strongly believe:

- In conducting business with transparency, integrity, and ethical practices.
- That our customers are the most valuable part of our ecosystem, and their success drives ours.
- That even in a highly automated world, maintaining a human touch is essential – for our customers, vendors, employees, and the society we serve.

17+

Employee Strength

600+

Executed Work Orders

100+

Happy Clients

5+

Years of Experience



## What We Do

### 1 System Integration

- PLC & HMI solutions for seamless machine control
- SCADA systems for real-time monitoring and data management
- AC & Servo Motion Control Drives for precision operations
- Process control instruments and sensing devices for optimized performance

### 3 Manufacturing Control Panels

We specialize in the design, manufacturing, supply, and commissioning of a wide range of control panels, including: PLC Panels/ PCC/APFC/Drive Panels/MCC Panels/SCADA Systems/Instrumentation Panels etc.

### 5 Custom Built Application for OEMs

Develop and commissioning customized application as per Control Philosophy provided by OEMs in view of long-term business association.

### 7 Documentation and Operation Training

We provide Electrical Drawing, Panel Test Report, List of parameters of VFD and Instrumentation along with Control Panels and Operation Training on SCADA/HMI during commissioning stage.

### 2 Software and Cutting Edge Technologies

- IoT-enabled solutions for smarter connectivity and automation
- Advanced data loggers for precise data recording and analysis
- Energy monitoring & data management systems to optimize resource usage
- Industrial IoT (IIoT) solutions for intelligent, connected operations

### 4 Project Execution

Execute the Project starting from concept to commissioning  
Design in EPLAN and CAD  
Communicate through Industrial Standard Field bus such as Profinet, Ethernet, Modbus and USS

### 6 AMC

Provide AMC Service in PLC Panel and SCADA system for trouble free operation of your plant and machineries

### 8 Service

We provide fast, reliable after-sales support to keep your systems running smoothly. Our expert team ensures minimal downtime with timely maintenance and assistance.



## How We Work



### Application Analysis

The process begins with a detailed study of the system or machine to be automated. Key parameters like input/output requirements, control logic, safety features, and operational flow are identified. Site conditions and integration needs are also assessed. This analysis helps define the scope of automation and guides the selection of suitable hardware and software components.



### Component Selection & System Design

Based on the application study, suitable PLCs, HMIs, and other components are selected. A detailed Bill of Materials (BOM) is created, ensuring compatibility and efficiency. Electrical schematics and panel layouts are designed to meet the process and safety requirements.



### Control Panel Engineering

The control panel is fabricated as per the approved design and layout. All components like PLCs, relays, terminal blocks, and power supplies are mounted and wired with precision. Proper labeling, cable routing, and internal testing ensure a clean and reliable build.



### Programming, Testing & Quality Check

PLC, HMI/SCADA are programmed according to the control logic. Each input/output is tested through simulations to verify functionality and interlocks. Rigorous quality checks and a Factory Acceptance Test (FAT) ensure the system is ready for deployment.



### Installation & Commissioning

The panel is installed on-site and connected to all field devices. Final wiring checks and system power-up are carried out. Real-time process testing is performed to ensure reliable and smooth operation before handover.

# Process Automation

In today's competitive landscape, process industries demand greater flexibility, efficiency, and product quality – all while reducing time-to-market and ensuring maximum safety.

To meet these evolving needs, industries are embracing the Digital Enterprise approach, focusing on high-performance, cost effective solutions with minimal environmental impact.

At ACME Automation, we simplify this transformation by delivering advanced, web-based digital process automation solutions with a modern graphical interface. Our systems are designed to boost operational efficiency and include a centralized, object-oriented database for managing all plant information seamlessly.

We provide tailored process automation solutions for:

- Water, Wastewater & Sewage Treatment Plant
- Food, Dairy & Beverage Industries
- Chemical, Agrochemical & Fertilizer Plants
- FMCG Applications

With ACME, your process automation becomes smarter, faster, and future-ready.



## Water, Waste Water and Sewage

- ETP
- STP
- UF RO Plant
- MEE Plant
- ATFD Plant
- ZLD (ETP + UF RO + ME)
- MVRE

## Chemical, Agrochemicals & Fertilizers

- Boiler Automation
- Industrial Dryer
- Centrifugal Machine
- Fermentation Plant
- Distillation Plant
- Decantation Plant
- Cooling Tower
- Liquefaction
- Weigh Checker
- Mixers & Blenders
- Hot Air Generator
- Belt Flaker



## Food, Dairy & Beverages Industry

- Palletizing
- Filler
- CIP System
- Pasteurizer Automation
- Centralized Automation
- Bottle Washer
- Packer Machine

## FMCG

- Tank Farm
- Hair Oil Manufacturing
- Water Base Manufacturing
- Pigging System
- CIP System



# Machine and Plant Automation

Every machine builder and plant manufacturer has unique automation requirements. In today's fast-paced industrial environment, the demand for reduced downtime, greater efficiency, enhanced flexibility, and uncompromised product quality is higher than ever. Achieving these goals requires powerful, versatile, and precise automation solutions.

At ACME Automation, our deep market expertise enables us to provide tailored products, services, and digital solutions that deliver long-term reliability and superior performance. Our Electrical Automation portfolio integrates advanced technologies to meet the evolving needs of machine and plant automation.

Based on client-specific control philosophies, we offer PLC, VFD, and Servo-based motion control solutions for a wide range of applications, including:

- Saw Pipe Plants
- Steel & Aluminium Industries
- Packaging Solutions
- Material Handling Plants
- Air Pollution Control Systems
- Plastic & Rubber Processing
- Construction
- Pulp & Paper Industries
- Printing Lines
- General Purpose Applications

With ACME as your partner, you gain automation solutions designed for precision, scalability, and sustained success.

## Saw Pipe Plants

- Edge Milling Machine
- 3 Roll Bending Machine
- Post Bending Machine
- Root Welding Machine
- ID/OD Welding Flux Recovery
- Pipe Conveyor
- Mechanical Pipe Expander
- Hydro tester
- Beweling Machine
- Pipe coating plant



## Plastic & Rubber

- Roto Moulding Machine
- Rubber Extruder Machine
- Rubber Mixing Mill Automation
- Rubber Dispersion Kneader Machine
- Rubber Calendering Machine
- Rubber Injection Moulding Machine
- Hydraulic Press Machine
- Crimper Machine
- Plastic Extrusion Machine

## Steel & Aluminum

- Online cutting machine
- Tensile Testing Machine
- Layer Winding Machine
- Wire Drawing
- Cut to Length
- Slitting Line
- Skin Pass
- 6 Stand Tandem Cold Rolling Mill
- Annealing Furnace
- Cold Rolling Mill
- Hot Rolling Mill
- AGC
- Tension Levelling Line
- Color Coating Line
- Pretreatment Line
- Caster
- Centralized Monitoring & Controlling System



## Packaging

- VFFS Machine
- CUP Filler Machine
- Auger Filling Machine



## Material Handling

- Pick to Light Automation
- 3 Axis Robot for Pick & Place
- Pneumatic Conveying
- Conveyor Application Automation
- Ash Handling System
- Coal Handling System

## Air Pollution Control Equipment

- Dust Collection system
- Pneumatic Conveying System
- Blower
- Centrifugal Pump
- ID and Axial Fan



## Construction

- Concrete Batching Plant
- Asphalt Batching Plant
- Tower Cranes & Hoists
- Paver Machine
- Concrete Block Making Machine
- Vertical Pipe Making Machine

## Renewable Energy

- Solar Energy
- Wind Energy

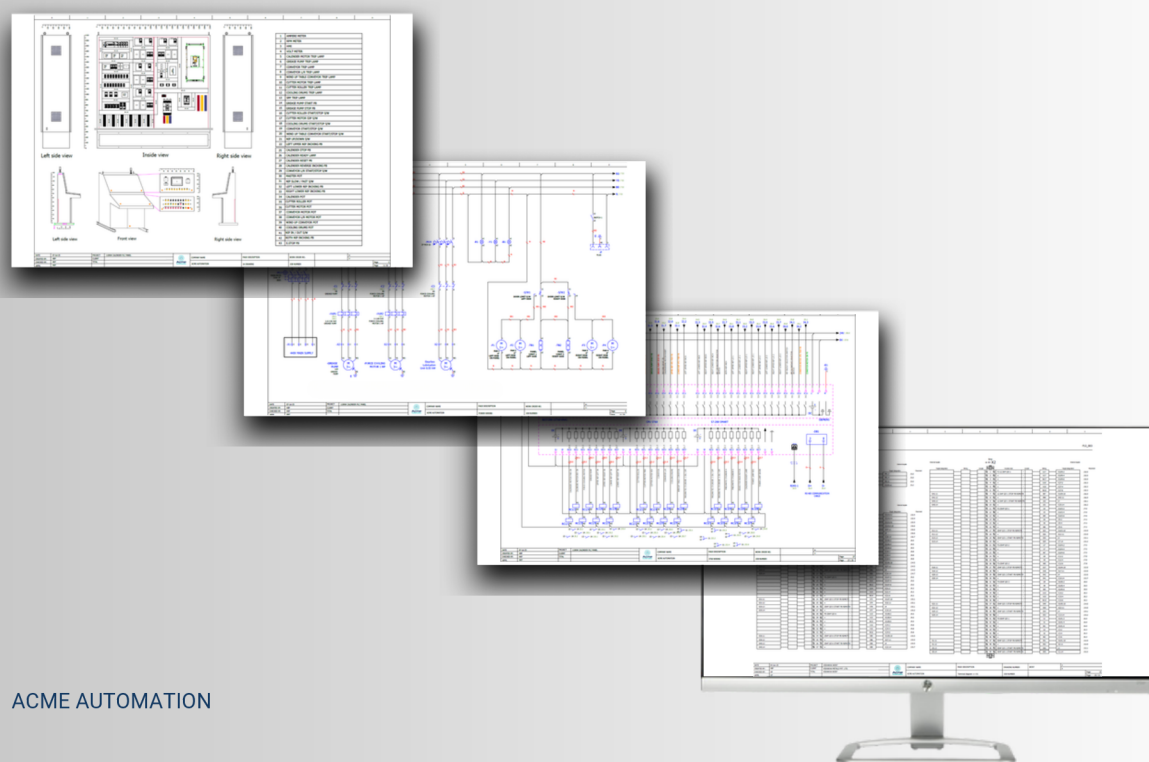


## Panel Manufacturing

ACME Automation provides a one-stop shop for all your automation needs. Our in-house control panel manufacturing facility produces a comprehensive selection of panels, including LT Panels, PDB Panels, MCC Panels, PLC Panels, VFD Panels, SD/DOL Starter Panels, Servo Panels, Mimic Panels, and Instrumentation Panels.

### KEY FEATURES

- **Precision Design:** All power and control drawings are created using EPLAN software as our standard design tool.
- **Streamlined Production:** Integrated with ERP systems for smooth production flow, reduced errors, and faster lead times.
- **Compliance with Standards:**
  - PMCC panels designed, assembled, and tested as per IEC 61439-1.
  - Automation & Drives panels designed, assembled, and tested as per IEC 60204.
- **Robust Construction:** Panels built with IP55-rated enclosures for reliable protection against dust and water ingress.
- **Durable Fabrication:** Panels constructed from CRCA sheets (1.6mm-3mm) for strength and longevity.
- **Advanced Surface Treatment:** Seven-tank pre-treatment process including degreasing, derusting, acid pickling, and phosphating, followed by primer coating and two coats of synthetic enamel paint in RAL 7035 or RAL 7032 shades.
- **High-Quality Wiring:** ISI-marked flexible PVC copper cables, properly lugged with copper lugs and ferruled for clear identification.
- **In-House Testing:** Routine Megger testing (1000V DC) and High-Voltage Testing (2.5kV for 1 minute) performed on PCC & MCC panels.
- **Stringent Quality Checks:** Each panel undergoes thorough inspection by our QC team before final delivery.
- **Value-Driven Delivery:** Providing the right solutions on time at competitive prices.



## PLC Panel

Our PLC panels are designed and built for reliability, scalability, and seamless integration across industries.

- PLC integration for robust and proven automation performance.
- Preparation of I/O lists and PLC architecture tailored to project requirements
- Custom program development as per the client's control philosophy
- Successful communication setup between Siemens-to-Siemens devices and with third-party systems
- Cubicle enclosures available in MS or SS, using local or Rittal/nVent Hoffman make as per client preference
- Proven expertise with large-scale PLC systems
- Solutions for every need – from low-end applications to complex systems



## MCC / iMCC Panel



We provide Motor Control Center (MCC) and Intelligent MCC (iMCC) panels that are designed, assembled, and tested in full compliance with industrial standards, ensuring reliability and safety.

- Compartmentalized and non-compartmentalized designs to meet diverse industrial needs
- Proven expertise in commissioning MCC panels up to 4000A incomer with demanding applications like Saw Pipe Plants
- Flexible switchgear options from leading brands such as Siemens, Schneider, ABB, and L&T, as per client specifications
- Intelligent MCC solutions with Siemens Simocode, Schneider LTMR, and ABB UMC 100.3 smart relays
- Local and remote operation capabilities, along with auto and manual operation modes based on project requirements
- Motor starter switchgear selection as per Type 2 coordination or conventional selection charts

Our MCC and iMCC panels deliver high performance, safety, and flexibility for a wide range of industrial applications.

## VFD Panel

Our Variable Frequency Drive (VFD) panels are designed to deliver precise motor control, energy efficiency, and reliable performance across diverse industrial applications.

- Wide range of LV drives from 0.37 kW to 560 kW, tailored to project needs
- Versatile solutions for fans, pumps, conveyors, surface/center winders, compressors, mixers, extruders, agitators, and more
- Proven expertise in commissioning AC drive panels up to 560 Kw
- Seamless communication using industry-standard fieldbus protocols including Modbus, USS, Profinet, and Profibus

Our VFD panels are built to optimize performance, reduce energy consumption, and ensure long-term operational reliability.



## APFC Panel

Our Automatic Power Factor Correction (APFC) panels are designed to deliver optimized energy efficiency while ensuring reliable and safe power management.

- Automatic regulation: Continuously monitors and corrects the power factor with no manual intervention
- Energy efficiency: Minimizes reactive power consumption, lowering electricity costs and improving system performance
- Extended equipment life: Reduces electrical load and heat, enhancing the durability of connected equipment
- Advanced protection: Built-in safeguards against overload, short circuit, and overvoltage conditions
- Real-time monitoring: Digital displays for instant visibility of power factor, voltage, and load parameters
- Modular construction: Easy to install, expand, and maintain, ensuring long-term adaptability

Our APFC panels provide a smart, reliable, and cost-effective solution for maintaining optimal power factor across industries.



## PCC / PDB Panel

Our Power Control Center (PCC) and Power Distribution Board (PDB) panels are engineered for high performance, safety, and ease of operation, catering to both industrial and residential applications.

- Proven capability in commissioning panels with up to 4000A incoming breakers and 40 outgoing feeders
- Flexible switchgear options from trusted brands like Siemens, Schneider, ABB, and L&T as per client specifications
- Customizable busbar systems in copper or aluminium to suit project requirements

### Key Features:

- High functionality for reliable power distribution
- Trouble-free performance ensuring long-term operation
- User-friendly design for easy installation and maintenance

Our PCC/PDB panels are built to deliver efficient power management with uncompromised reliability.



## Instrumentation Panel

We specialize in the design, manufacturing, and supply of high-quality instrumentation panels for the efficient operation and monitoring of critical parameters such as temperature, pressure, flow, level, and electrical measurements.

Our expertise enables us to develop fully customized instrumentation panels tailored to meet the specific requirements of OEM clients, ensuring precision and reliability in every application.

Additionally, we provide PVC junction boxes equipped with terminals and markers, offering protection levels of IP54, IP55, and IP65, ensuring durability and safety in demanding environments.

## DOL / SD Panel

We design and manufacture Direct-On-Line (DOL) and Star-Delta starter panels – with or without relay/timer logic – in bulk quantities to meet the diverse needs of our clients across applications such as blowers, pumps, fans, RAVs, conveyors, and more.

Built using high-grade components and the latest technology, these panels are rigorously inspected by our experts to ensure superior quality and reliable performance.

Range:

- DOL Starters: Up to 7.5 HP, 3-phase
- Star-Delta Starters: Up to 500 HP, 3-phase

Our starter panels are designed for efficiency, durability, and long-term dependability in demanding industrial environments.



## Mimic Panel

Our mimic panels are designed to provide an accurate visual representation of process applications, helping operators monitor and manage complex systems with ease.

- Vinyl-based mimics and special-purpose PCBs equipped with SMD-based colorful LEDs for a clear display of plant layouts
- Modern visualization through touchscreen HMIs and/or SCADA systems, offering real-time access to trends, historical data, logs, recipes, and reports

These panels combine traditional mimic layouts with advanced digital interfaces, ensuring enhanced process visibility and control.



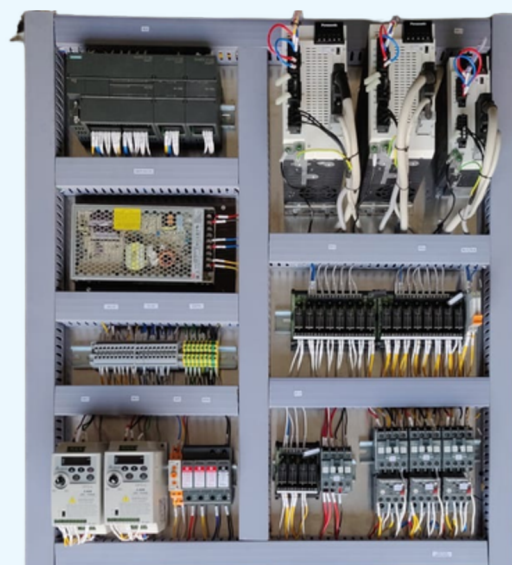
## Servo Panel

Our servo panels are designed for precise angular and linear motion control at specific speeds, utilizing incremental or absolute encoder feedback for unmatched accuracy.

A servo system combines motors, drives, and control feedback through encoder cables, delivering high-performance solutions across multiple industries, including robotics, pharmaceuticals, food & beverages, and manufacturing lines.

At ACME Automation, we provide servo system-based solutions ranging from 400W to 20kW, with seamless communication via Profinet (industrial fieldbus) or PTO.

Our focus is on delivering the right solution on time at a competitive cost, ensuring efficiency and reliability for your applications.



## AMC (Annual Maintenance Contract)

Ensure worry-free operation of your PLC panels and SCADA systems with our Annual Maintenance Contract (AMC) services.

At ACME Automation, we provide comprehensive maintenance support for the systems we supply, ensuring your plants and machinery operate smoothly and without interruptions.

Our AMC packages are designed to give our valued clients peace of mind, minimizing downtime and maximizing productivity through regular inspections, timely servicing, and expert support.

## Why is AMC so important ?



**Performance Assurance**  
Gaurantees the continued performance of PLC and SCADA



**Security**  
Security from any physical malfunction



**Mental Peace**  
Leave your worries to us as we give you the best experience

## Why you should choose ACME as your AMC partner ?



**Support**  
Gaurantees the future integration support



**Break Fix Support**  
Break support 10X7



**Consultancy Support**  
Consultancy provided by ACME AUTOMATION

## AMC Packages – Flexible & Reliable Support

We offer Annual Maintenance Contracts designed to keep your PLC panels and SCADA systems performing at their best.

### Contract Duration Options:

- 1 Year
- 3 Years (Consecutive)
- 5 Years (Consecutive)

### Types of AMC:

- Comprehensive – Complete coverage for parts and services
- Non-Comprehensive – Service-only support

### Scope of Services:

- Periodic Maintenance Visits: 4 visits annually (once per quarter), each covering up to 1 man-day
- Emergency Maintenance Visit: 1 visit annually, covering up to 2 man-days for urgent issues
- Remote Support: Email and telephonic assistance available Monday to Saturday, 10:00 AM to 6:00 PM

With ACME Automation, you get structured, dependable maintenance support that ensures smooth, uninterrupted plant operations.

## SIEMENS - Simatic Automation System

**SIMATIC from Siemens is a globally recognized industrial automation system.**

It offers a comprehensive range of automation solutions engineered to handle a wide spectrum of industrial tasks. Known for its flexibility and cost-efficiency, the SIMATIC platform is perfectly equipped to meet the increasing demands of modern manufacturing and process industries.

We offer as well Solutions on,

### SIMATIC PLC



LOGO! logic module



SIMATIC S7-1200 Basic Controllers



SIMATIC S7-200 SMART



SIMATIC ET200SP Distributed Controllers



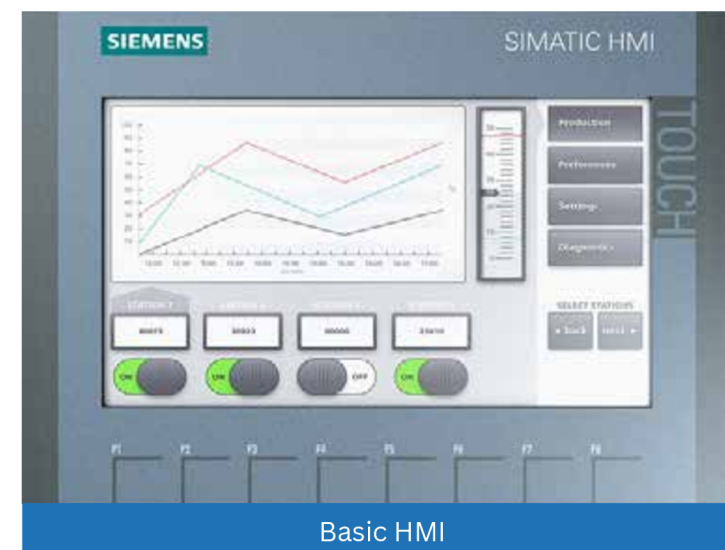
SIMATIC S7-1500 Advanced Controllers



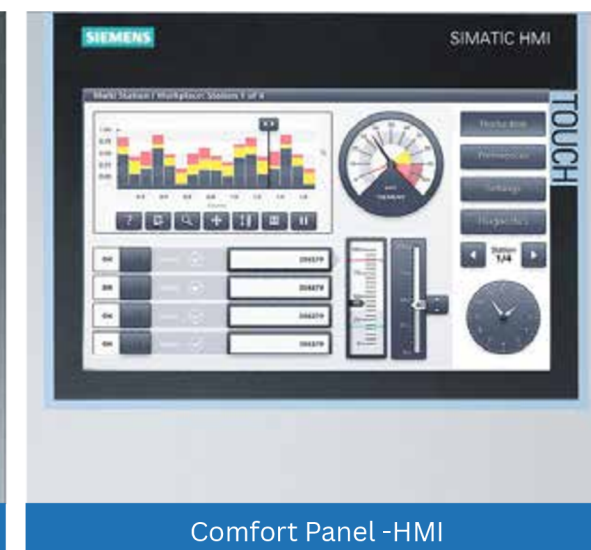
SIMATIC S7-400 Advanced Controllers

### SIMATIC HMI

- KTP basic 2nd generation series – KTP 400/KTP 700/KTP 900/KTP 1200
- Comfort Series – Key and Touch type – Size ranging from 4” to 22”
- Unified Series – Touch type – Size ranging from 7” to 22”



Basic HMI



Comfort Panel -HMI



Unified Basic Panel – HMI



Unified Comfort Panel – HMI

### SIMATIC DRIVES

- V20 – Cost Effective and easy to use AC Drive for basic application
- G120C/G120X/G120XA/G120 – Energy Efficient Module Inverter for Rugged application
- V90/S120 – Performance optimized and easy to use Servo Drive System





## SCADA

At ACME Automation, we understand that accurate, real-time data is essential for effectively managing automated systems. Our SCADA solutions are designed to deliver advanced visualization, monitoring, and control, integrating data from multiple systems and components into a single, user-friendly platform.

With our expertise in multi-vendor systems and industry-standard open protocols such as Modbus, Profibus, Profinet, and OPC, we create versatile, browser- and mobile-compatible solutions tailored to your needs. Our turnkey approach ensures seamless integration and optimized performance.

### Key Features:

- **High-quality graphics & animations** for intuitive visualization
- **Comprehensive alarm management** for timely responses
- **Data and event logging** for improved traceability
- **Real-time and historical trend analysis** for informed decision-making
- **Recipe management** for streamlined operations
- **Automated report generation** in Excel format
- **Multi-level system protection** for enhanced security
- **OPC and I/O drive connectivity** for smooth integration
- **Web client services** for remote monitoring
- **Built-in functional integrations** for added efficiency

Our SCADA systems provide scalable, future-ready solutions that make process monitoring and control smarter, faster, and more efficient.

## Preferred Brand Partners

SIEMENS

Schneider Electric

Allen-Bradley

PHOENIX CONTACT

Danfoss

Panasonic

Baumer

YASKAWA

## Our Group Companies

AMRUTA

accurate

MICRON ENGINEERS

ROLEX INDUSTRIES

Absolute electronics services

INDIA FLEX ENGINEERING

AAKASH METAL INDUSTRIES

ANKUR ENGINEERS

AMBUJA Founders & Engineers

## Our Major Clients

Welspun

BKT

VISHAKHA

MAN Industries (India) Ltd  
the line pipe people

torrent POWER

IndianOil

INDRAPRASTHA GAS

ONGC

NTPC

## Global Installation Through our OEM's

